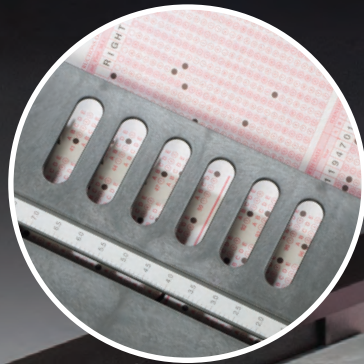


Rapid and Reliable Scanning On Your Desktop

OpScan® 4ES OMR Scanner

Trust the Scantron family of high-precision data-collection tools, with their proven optical mark recognition (OMR) data capture features, to meet your data management needs. The OpScan 4ES OMR scanner is one of the most versatile and efficient desktop scanners available for automated data collection.

Open Feed Path



**Rapid Scanning:
More Than 2,800
Sheets per Hour!**



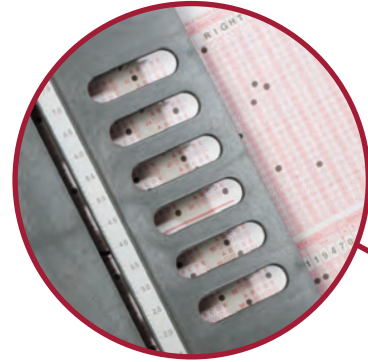
**Reliable Pencil-Mark
Capture**

SCANTRON®

Trust the Scantron brand

More than 40 years of data capture expertise provides the quality and reliability you deserve.

Take the Guesswork Out of Scanning
Open feed path provides clear view of forms being scanned.



Capture ALL Your Data with a Single Scanner

Advanced read heads collect multiple data types in a **single pass**: pencil *and* pen OMR marks, bar codes, handprint capture, and much more.



Accommodate Multiple Form Sizes

Flexible software tools (available separately) let you define a variety of form types and sizes.

Avoid Damaging Static Shock

Static-dissipating plastics maintain light weight while eliminating static buildup and paper-handling issues.



Faster, Easier Form Loading

The easy paper guide means no more waiting for tray motors—simply press and load. Feed detection ensures every form is fed correctly.



Avoid Paper Jams

Built-in stand tilts the scanner so forms are always in the right place for faster scanning without paper jams.



Read Marks Accurately

Reads pencil marks without smudging! Rollers feed from side of form, instead of above form like most scanners. Roller angle keeps forms straight, increasing scanning speed and avoiding paper jams.

Optional Equipment

- Scan two-sided forms in a single pass with an upgrade to a dual-sided read head.
- Print information directly on the sheet being scanned, based on the scanned data, by adding an internal, interactive printer. Print error codes, messages, serial numbers, validation flags, and test scores on each form without slowing down scanning.
- Process data contained in most standard barcode formats using the optional barcode reader.
- Score tests, collect surveys, and tally ballots—without being connected to a computer—by adding the SelfScore feature.
- Collate scanned sheets based on criteria selected in your scanning software using the optional Select Stacker.



Technical Specifications

Physical Description	Length: 540 mm (21.25") Width: 369 mm (14.5") Height: 229 mm (9") Weight: 7.71 kg (17 lbs.)
Environment	Operating Temperature: 16° to 29°C (60° to 85°F) Humidity: 40% to 60%, non-condensating
Power	100-240-volt operation: 100-240 volts AC (-10%, +6%); 50-60 Hz Appropriate power plug for your location 15-amp dedicated circuit
Communications	USB 2.0, using a virtual serial port with user-defined protocol.
Operation	Read Heads: Contact Image Sensor Arrays, 16-level OMR, Pencil Read Capabilities. Forms: 64 mm x 127 mm to 229 mm x 356 mm (2.5" x 5" to 9" x 14"); 90-148 g/m ² offset (60-100 lb.) Scans both Mark Reflex and Trans-Optic forms Feeder Capacity: Auto-feed, 100 sheets Output Stacker Capacity: 100 sheets, main stacker; 100 sheets, select stacker (if present) Message Display: 40 character, alphanumeric Scanning Rate: 2,800 sheets per hour (actual scanning rate depends on quantity of data read from the form and the amount of processing done on the data while scanning) Multi-feed detection

Product information is subject to change without notice.



GET THE RESULTS YOU NEED TO MAKE INFORMED BUSINESS DECISIONS TODAY!

For a free consultation to meet your organization's goals, call **800.722.6876** or visit us at **www.scantron.com** to learn more.

About Us

Scantron® provides technology to help you collect data you can use. We offer solutions and services, delivered with the quality you expect from decades of experience. Whether you need to work on paper, online, or anywhere in between, Scantron can meet you where you are and help you get to where you want to be.